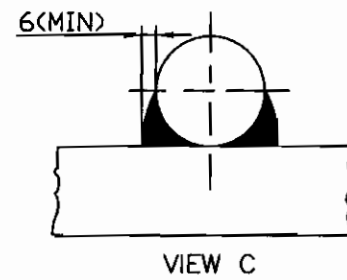
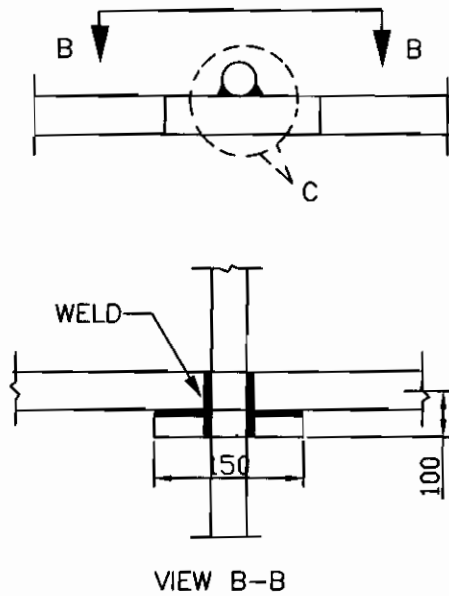
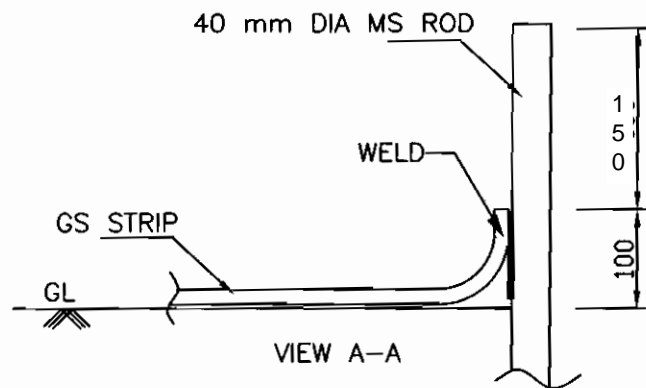
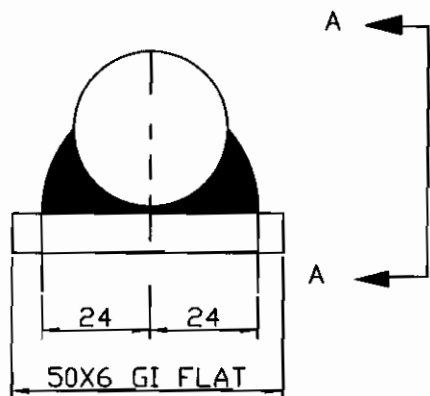


2. RIGHT ANGLED JOINT



3. ROD TO STRIP



EQUIPMENT & STRUCTURE EARTHING DETAILS WELDING DETAILS - II

COMPUTER REF. NO.

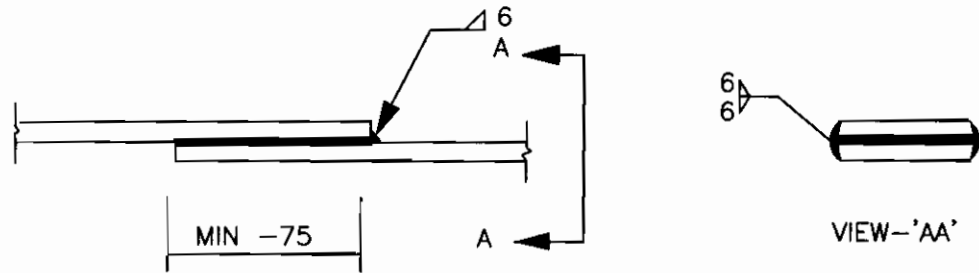
DRG. No.

TB-STD-316-ROD WELDING

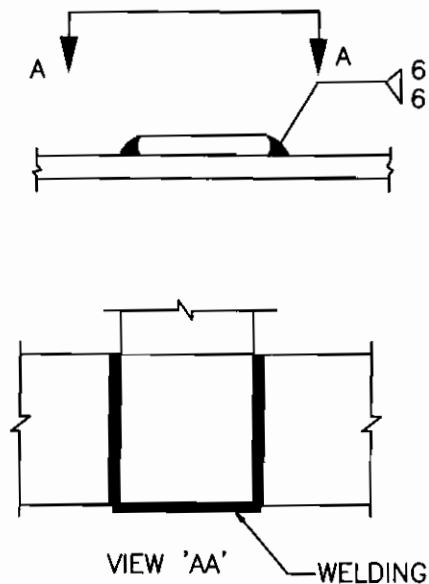
REV. 00

A. STRIP TO STRIP (50X6 MS FLAT)

1. STRAIGHT LAP JOINT/RISER



2. CROSS LAP JOINT



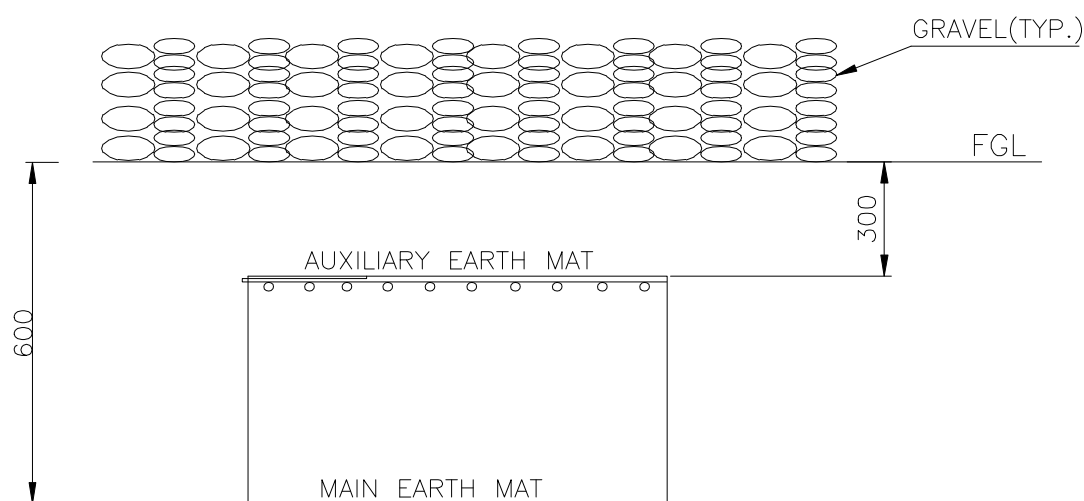
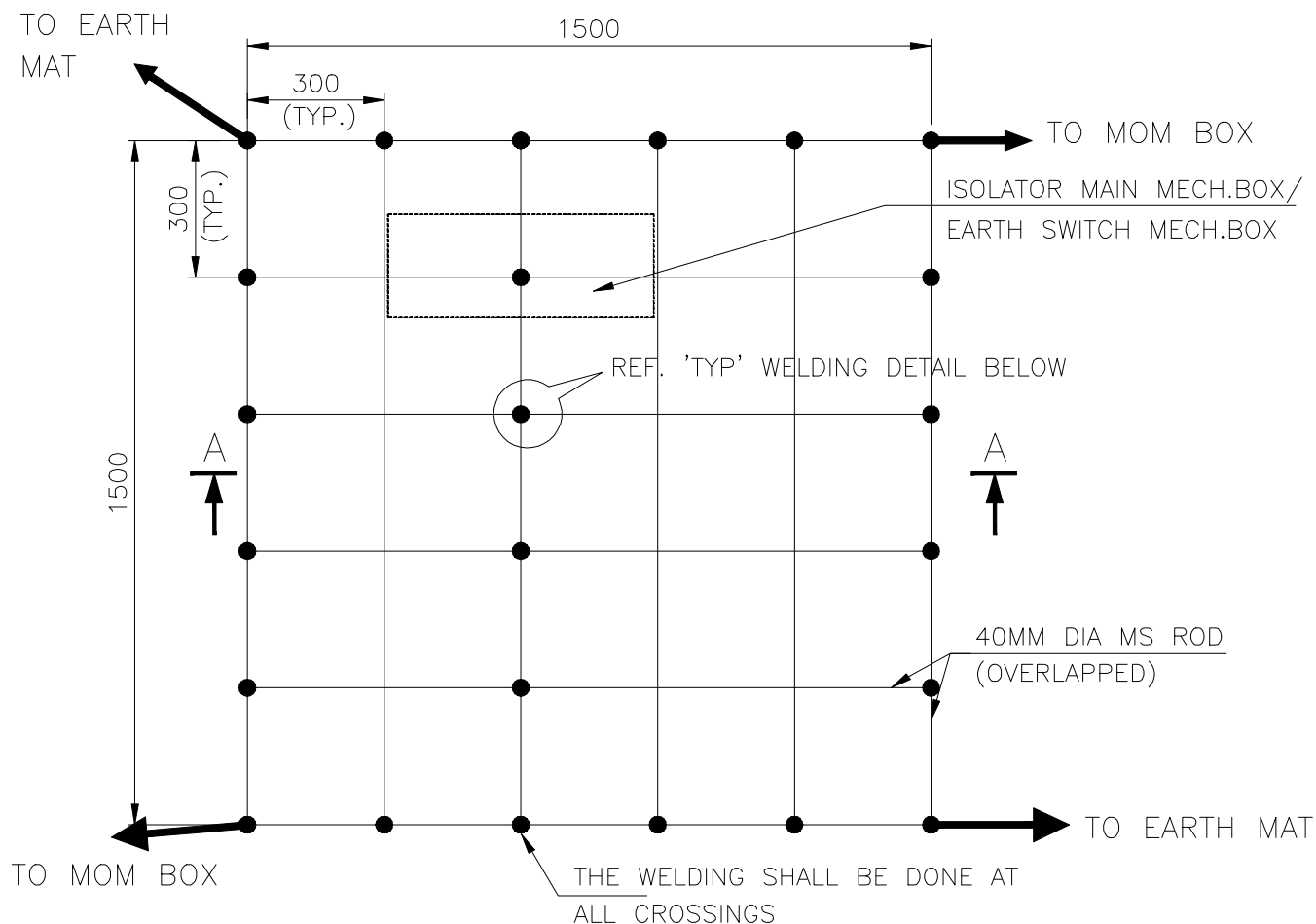
EQUIPMENT & STRUCTURE EARTHING DETAILS WELDING DETAILS - I

COMPUTERREF.NO.

DRG. No.

TB-STD-316-ROD WELDING

REV. 00



SECTION AA

NOTE:

AUX. EARTH MAT SHALL BE SO POSITIONED THAT THE FOOT OF THE OPERATOR ALWAYS LIE OVER THE AUX. EARTH MAT AREA WHILE ATTENDING / OPERATING THE MECH. BOX THE CABLE TRENCH ROUTING SHALL BE PLANNED ACCORDINGLY.



COMPU. DRG. REF.

EQUIPMENT EARTHING DETAILS

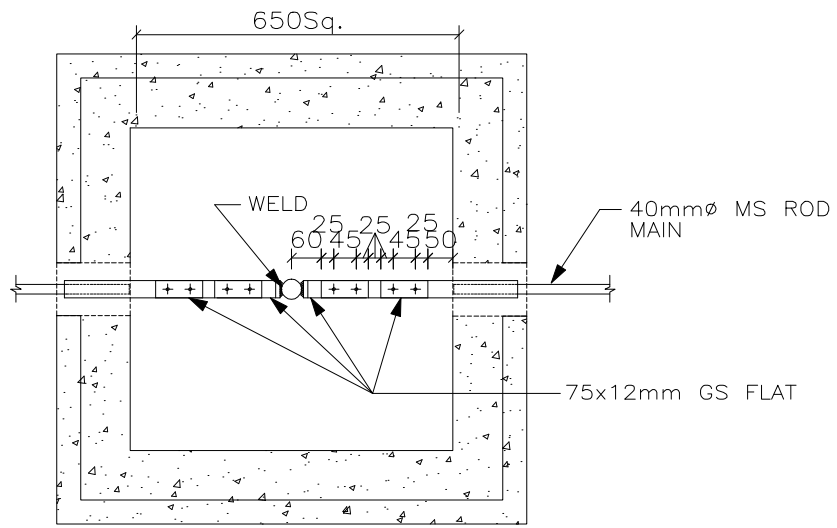
AUXILIARY EARTH MAT FOR ISOLATOR MAIN MECH., E/S MECH. BOX

Report No.

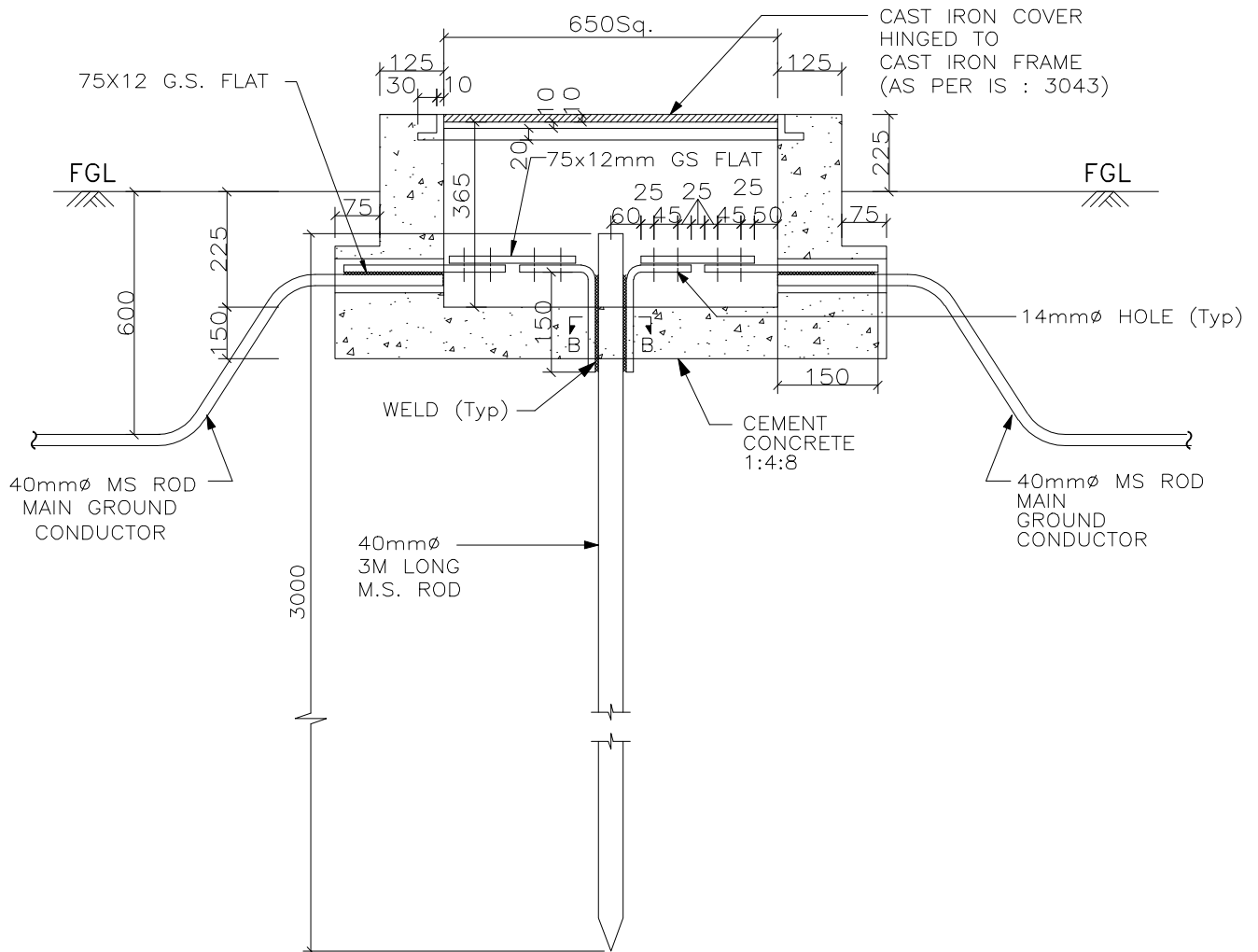
TB-XXX-316-AUX_MAT

SHEET No.

14



PLAN



ELEVATION



EQUIPMENT EARTHING DETAILS ROD ELECTRODE WITH TEST LINK FOR LM, TOWER WITH PEAK, LA & CVT

COMPU. DRG. REF.

DRG. No.

TB-4-XXX-316-ROD_ELECTRODE

SHEET No.